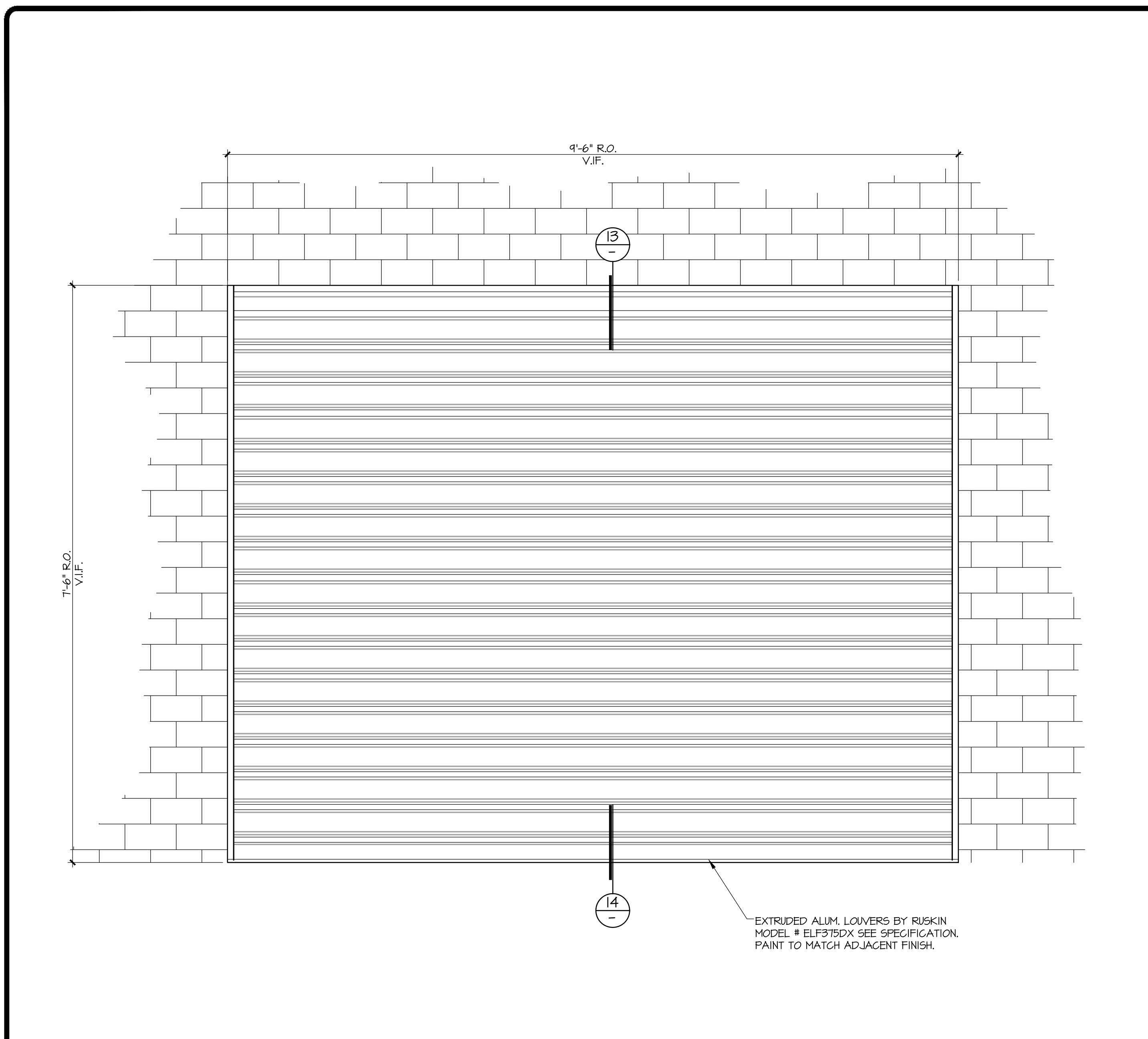
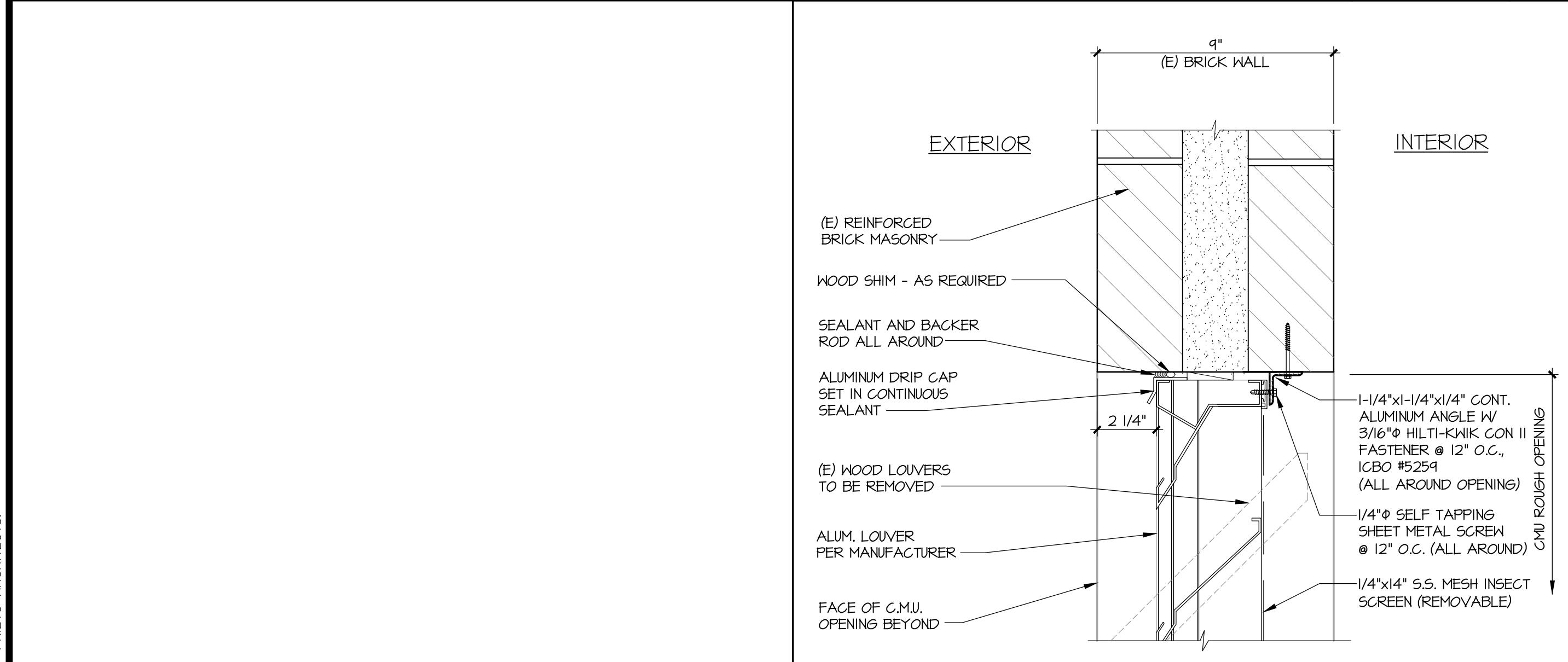


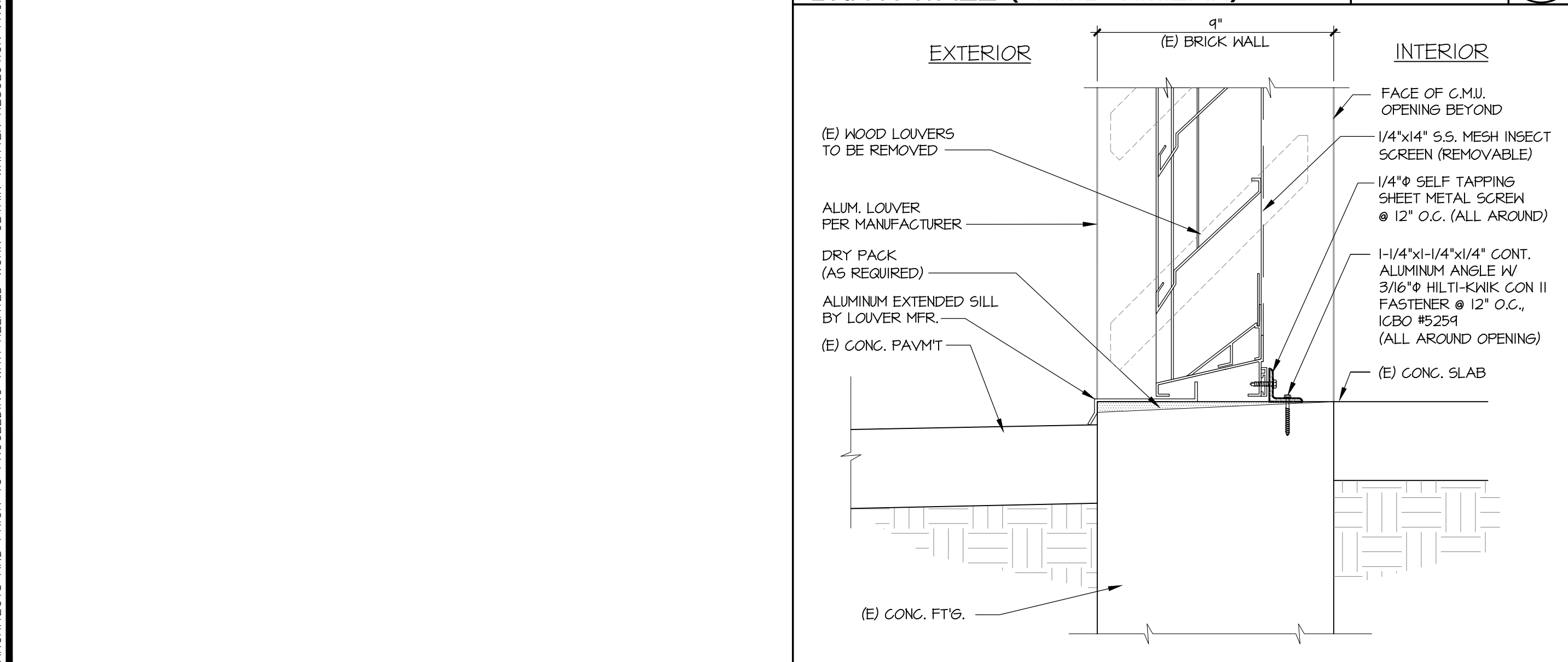
BY ZEMBA + PRIETO ARCHITECTS ALL COMMON LAW COPYRIGHT AND OTHER PROPERTY RIGHTS RESERVED. THIS DOCUMENT IS AN ORIGINAL AND UNPUBLISHED WORK PRODUCT OF ZEMBA + PRIETO ARCHITECTS. THIS WORK SHALL NOT BE DUPLICATED, COPIED, REPRODUCED, OR ASSIGNED TO ANY THIRD PARTY WITHOUT OBTAINING THE EXPRESS WRITTEN CONSENT OF ZEMBA + PRIETO ARCHITECTS. VISUAL CONTACT WITH THIS DOCUMENT SHALL CONSTITUTE CONCLUSIVE EVIDENCE OF THESE RESTRICTIONS. CONTRACTORS SHALL VERIFY AND BE RESPONSIBLE FOR ALL DIMENSIONS AND CONDITIONS ON THE JOB. UPON DISCOVERY OF ANY VARIATION, DISCREPANCY, OR OMISSION, NOTIFY ZEMBA + PRIETO ARCHITECTS AND PRIOR TO PROCEEDING WITH RELATED WORK OBTAIN WRITTEN RESOLUTION FROM ZEMBA + PRIETO ARCHITECTS.



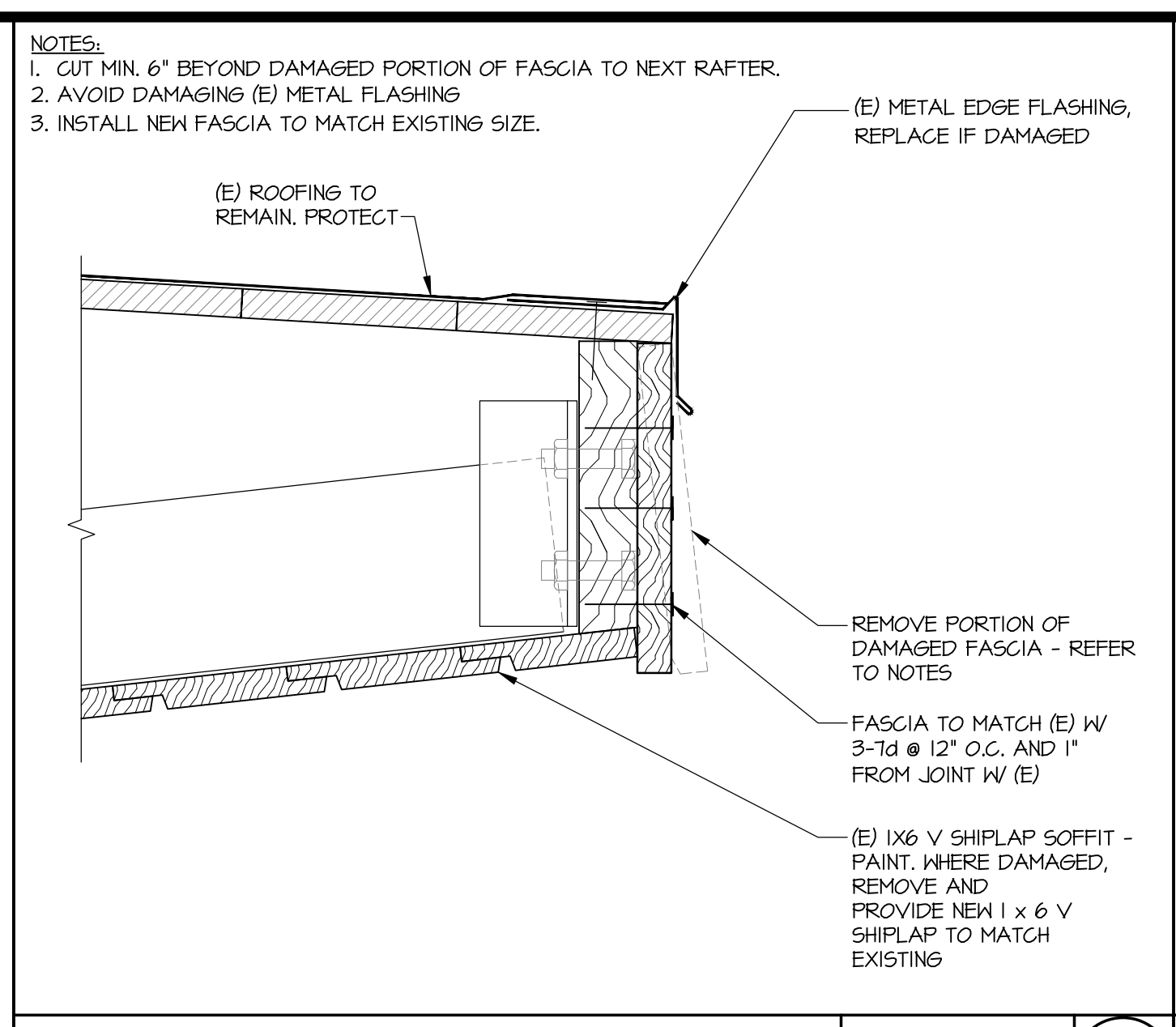
**MECHANICAL LOUVER - ELEVATION** SCALE: 3/8" = 1'-0" 12



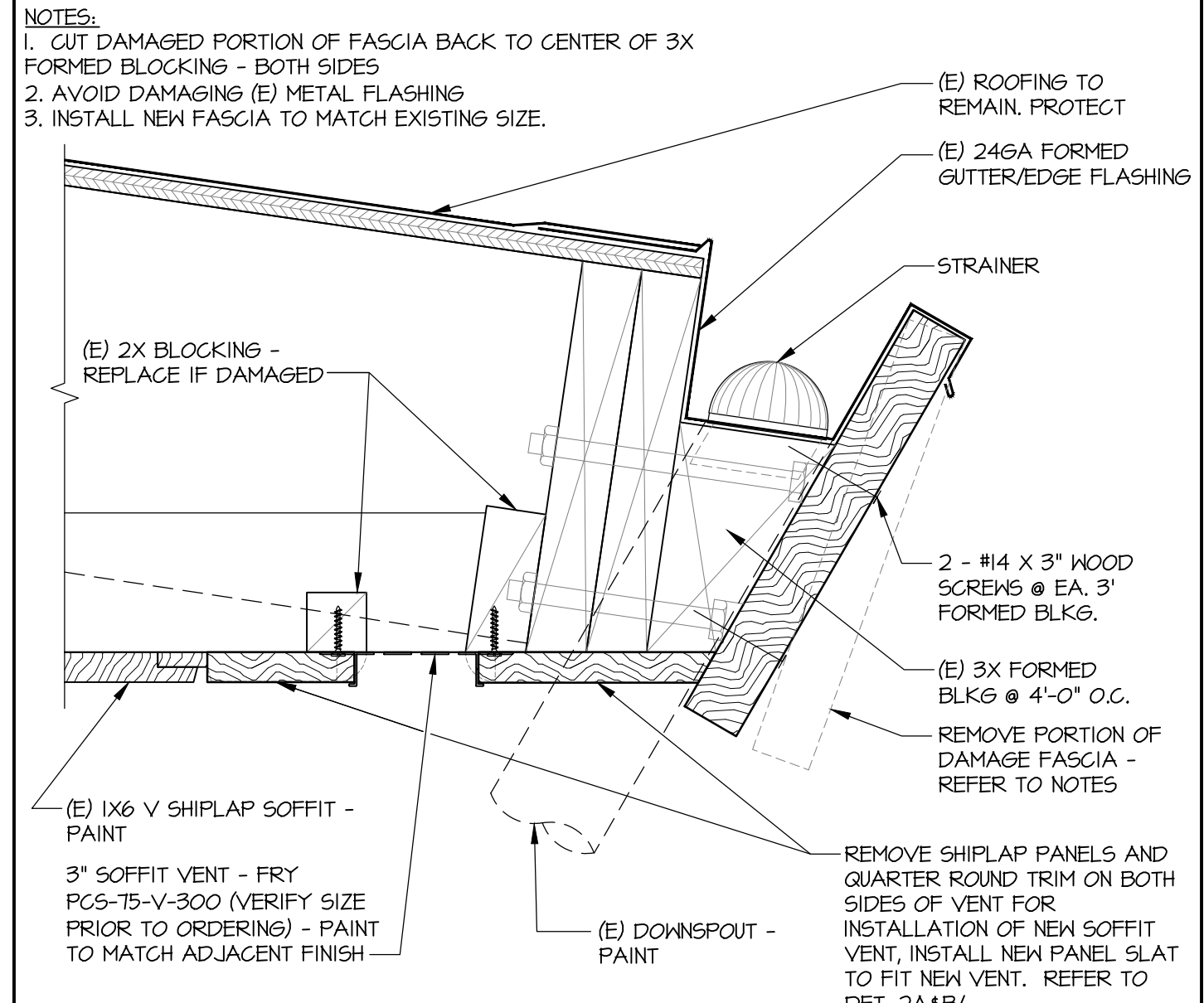
**LOUVER HEADER • BRICK WALL (JAMB SIMILAR)** SCALE: 3/8" = 1'-0" 13



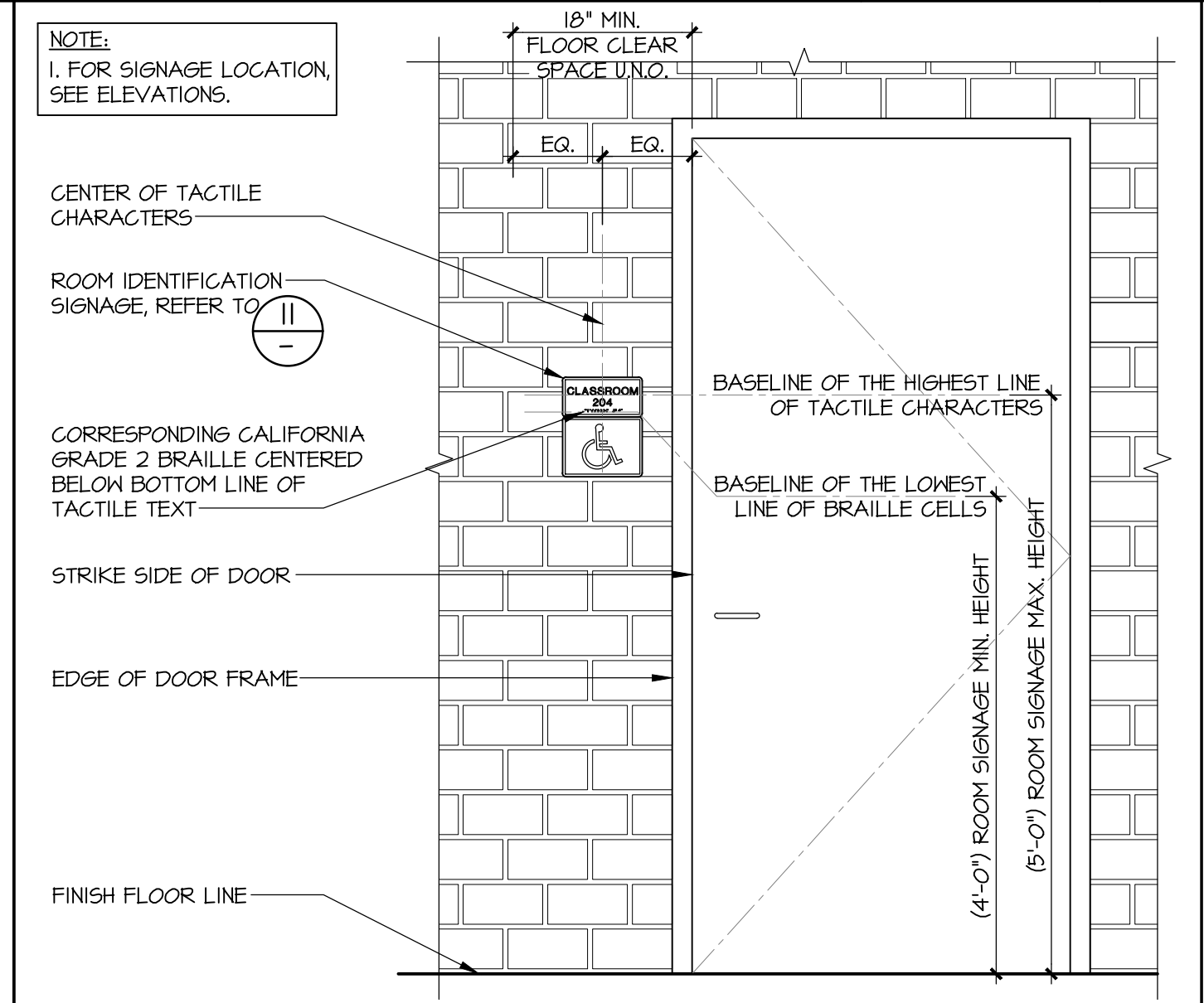
**LOUVER SILL • BRICK WALL** SCALE: 3/8" = 1'-0" 14



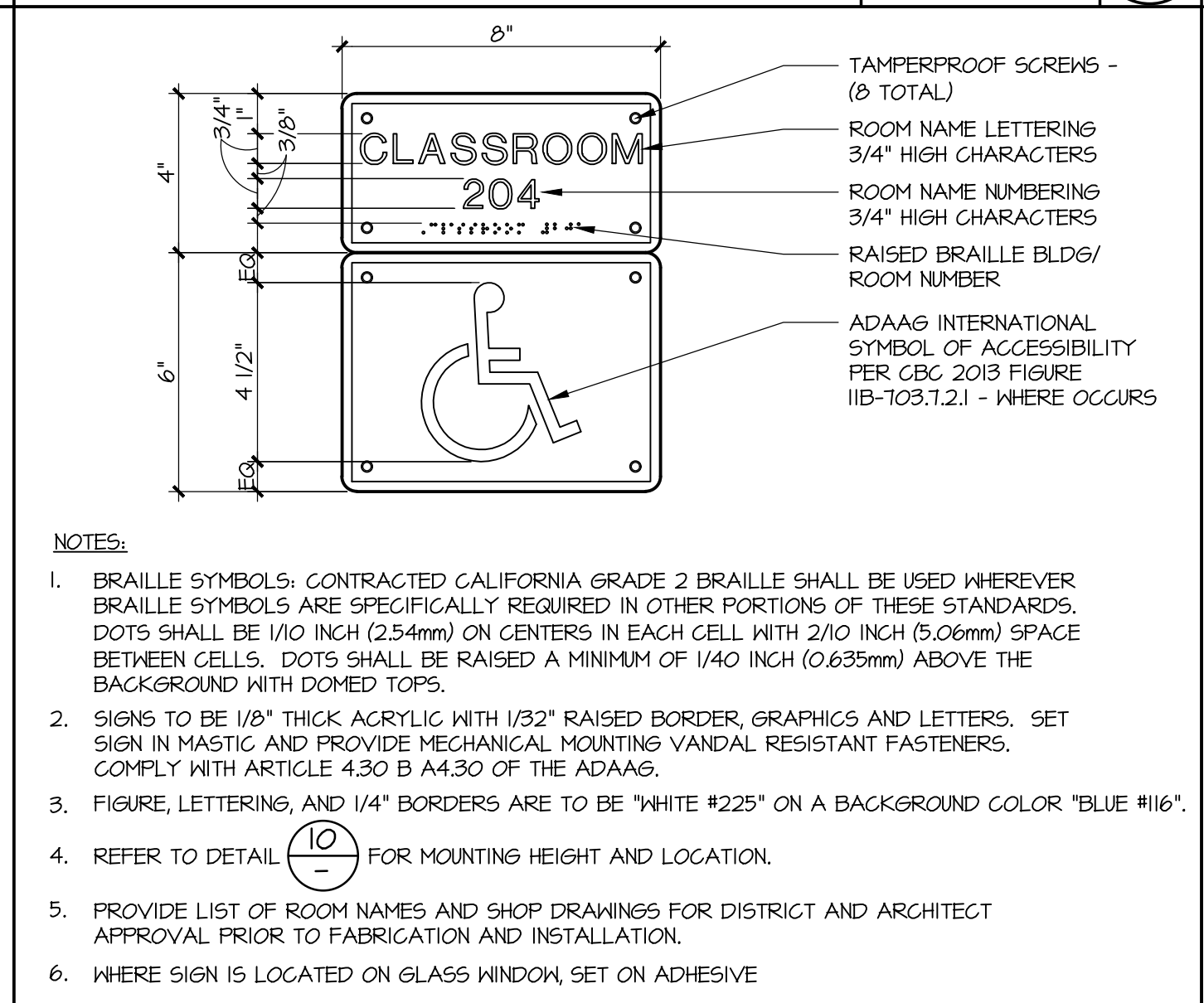
**REMOVE WOOD FASCIA, TYPICAL** SCALE: 3/8" = 1'-0" 8



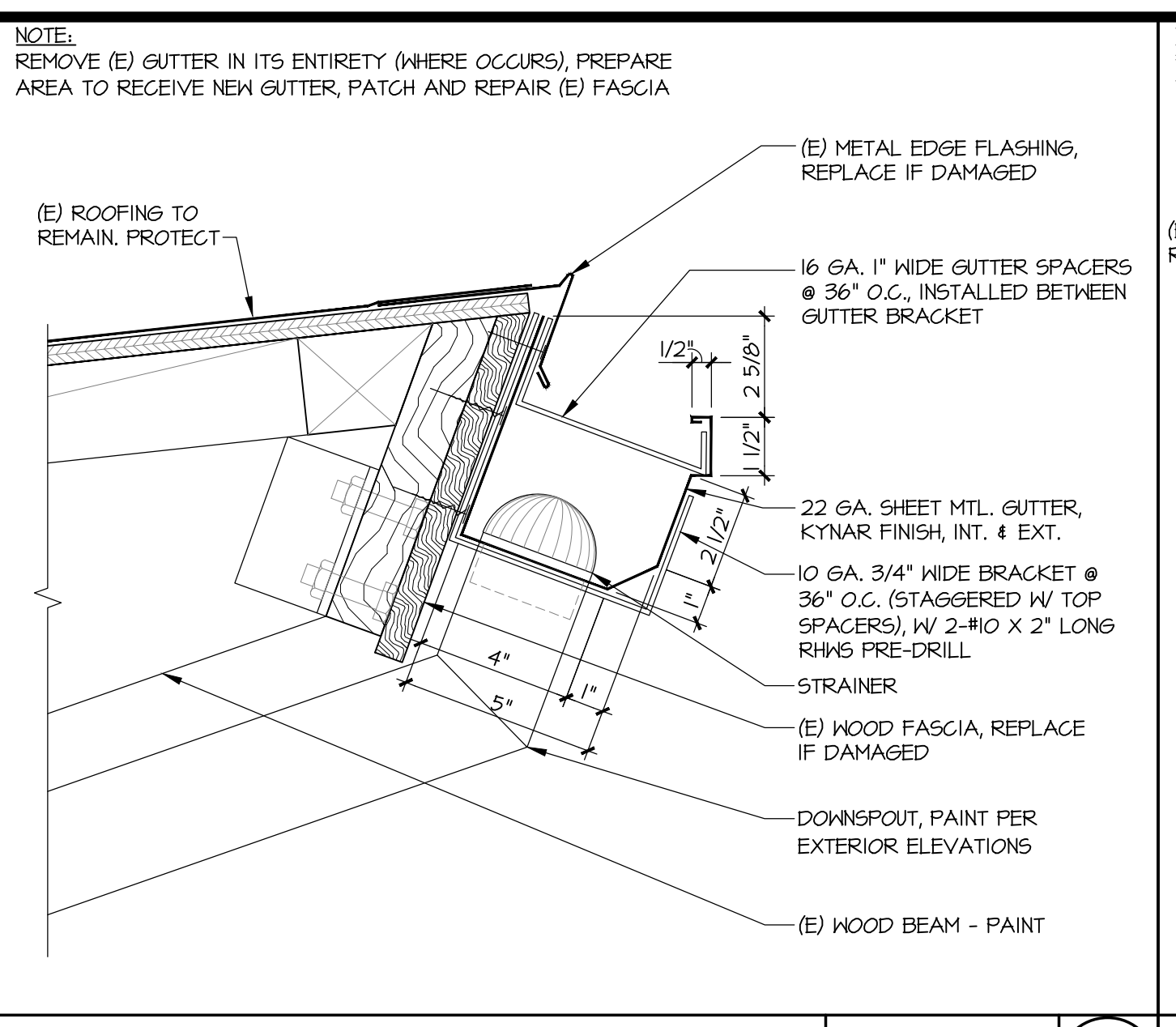
**REMOVE WOOD FASCIA, TYPICAL** SCALE: 3/8" = 1'-0" 9



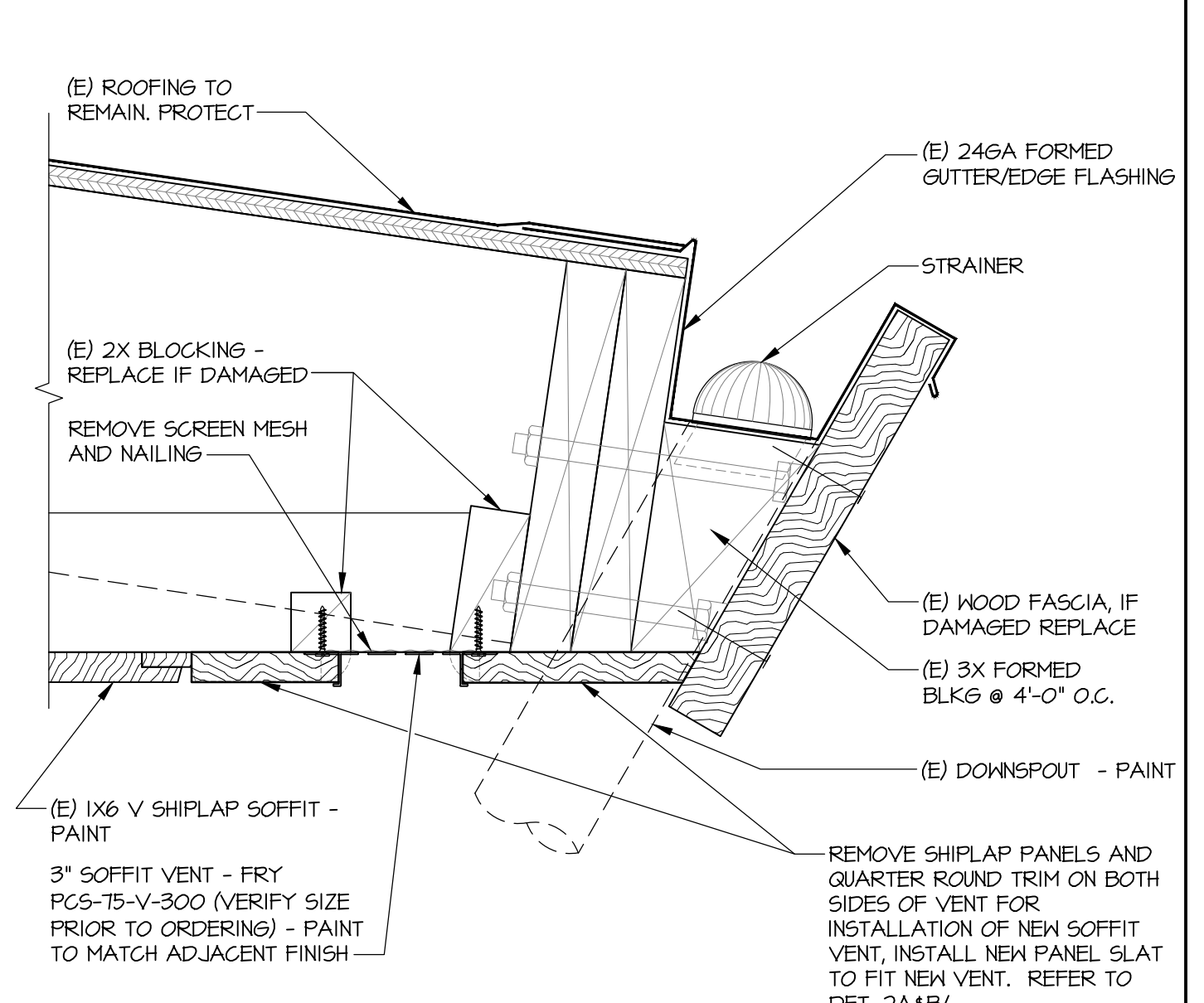
**ELEVATION OF ROOM NAME AND NUMBER SIGNAGE** SCALE: 3/4" = 1'-0" 10



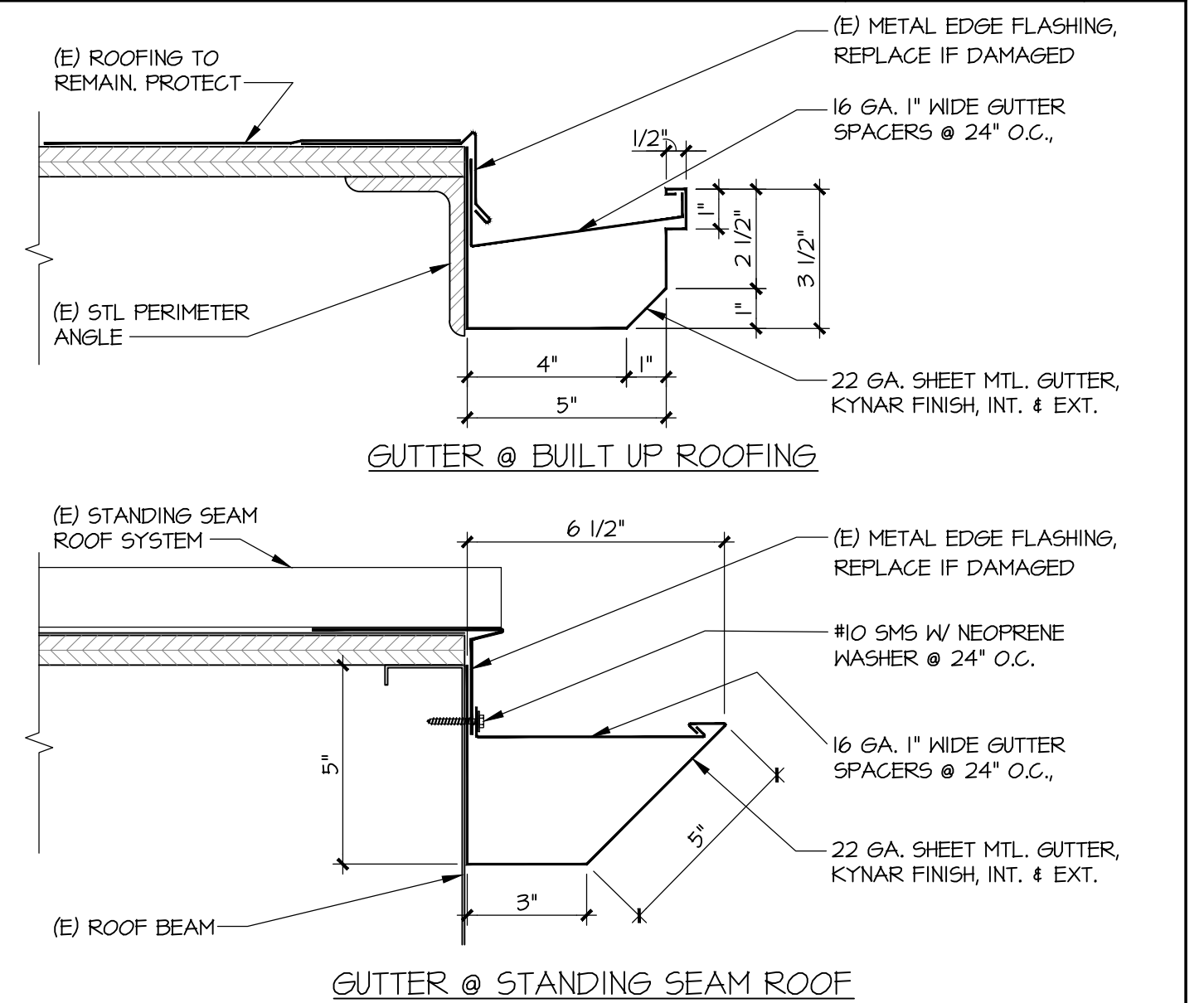
**ROOM IDENTIFICATION SIGNAGE** SCALE: 3/8" = 1'-0" 11



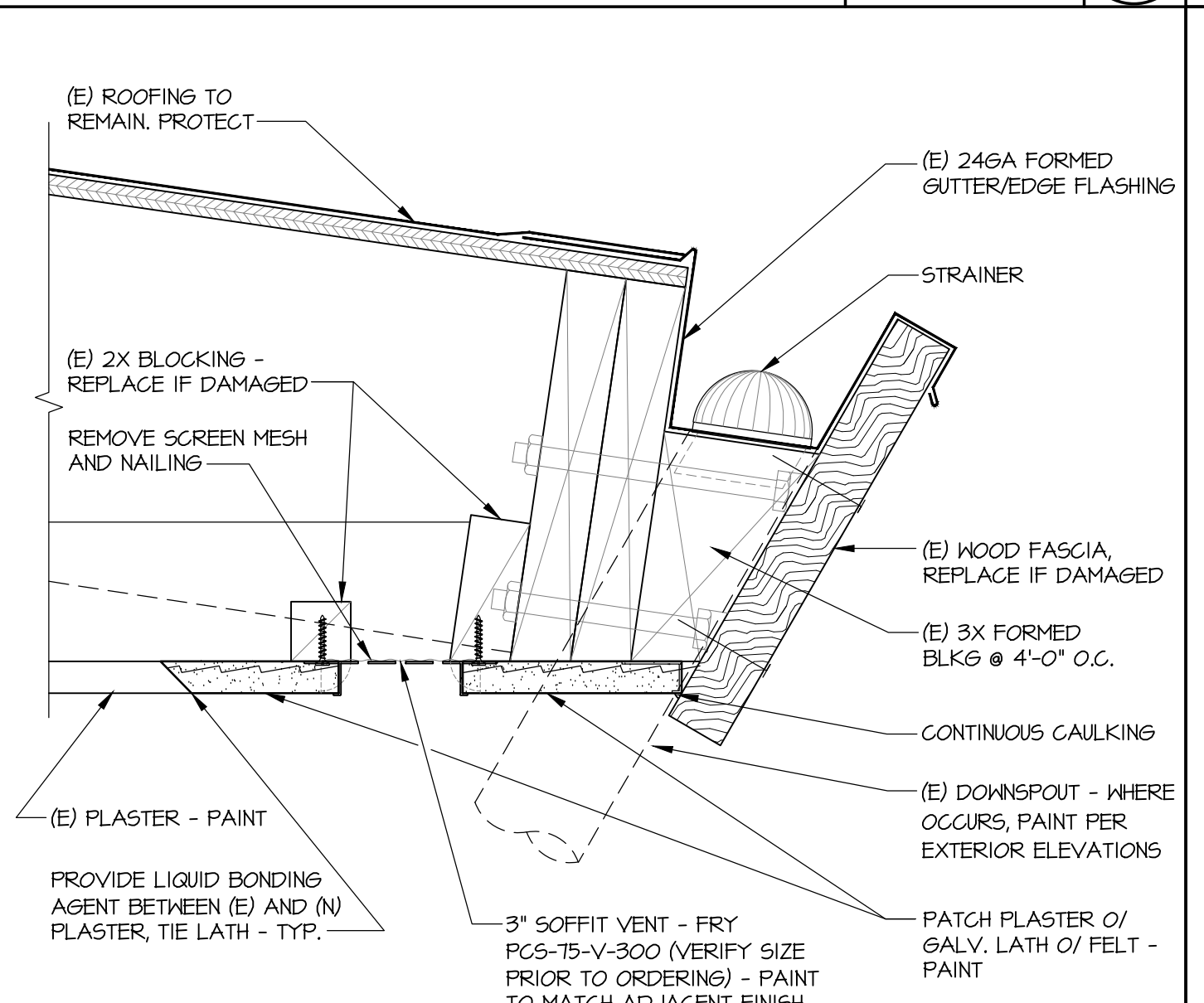
**GUTTER • EAVE** SCALE: 3/8" = 1'-0" 4



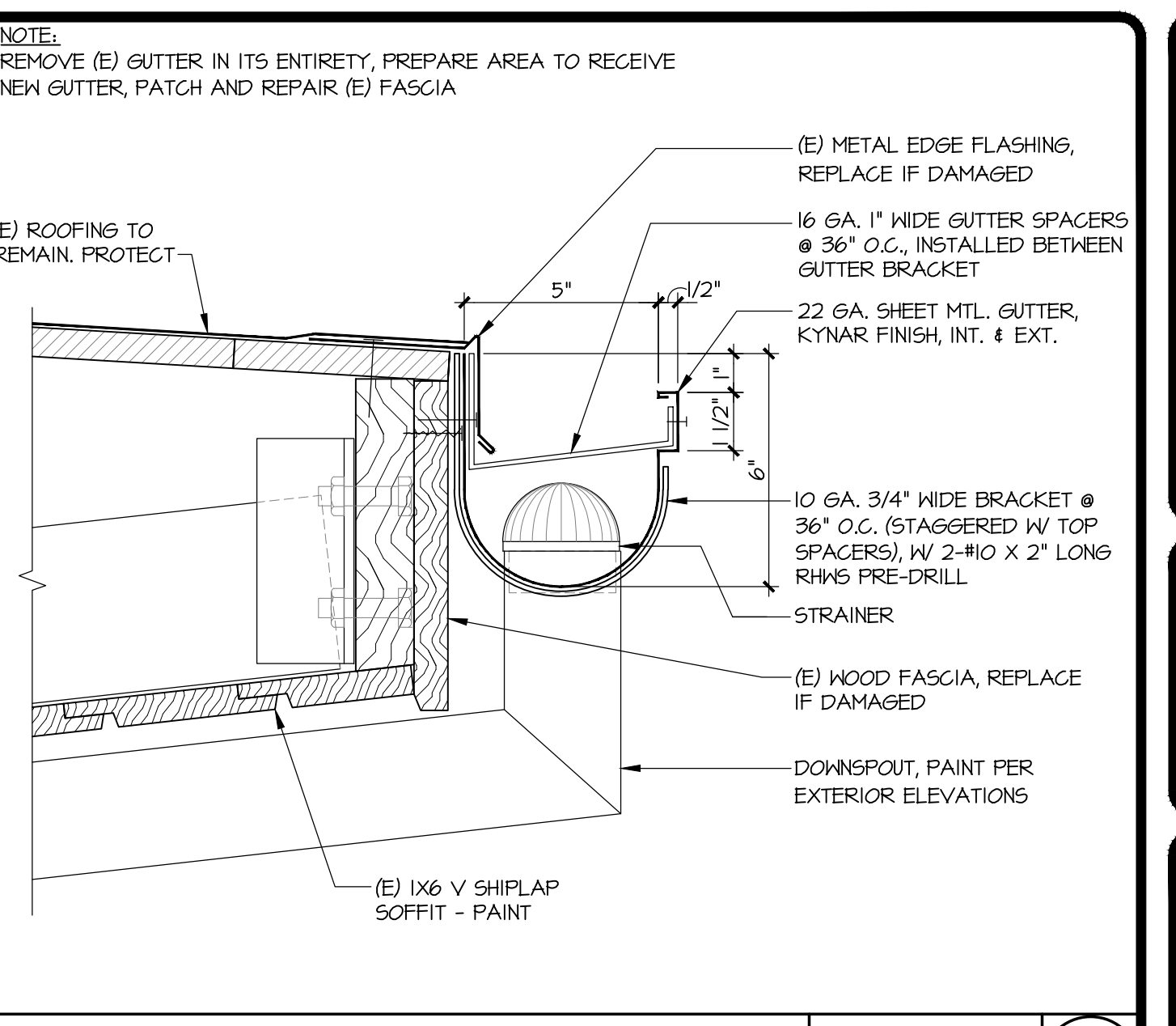
**GUTTER • EAVE** SCALE: 3/8" = 1'-0" 1



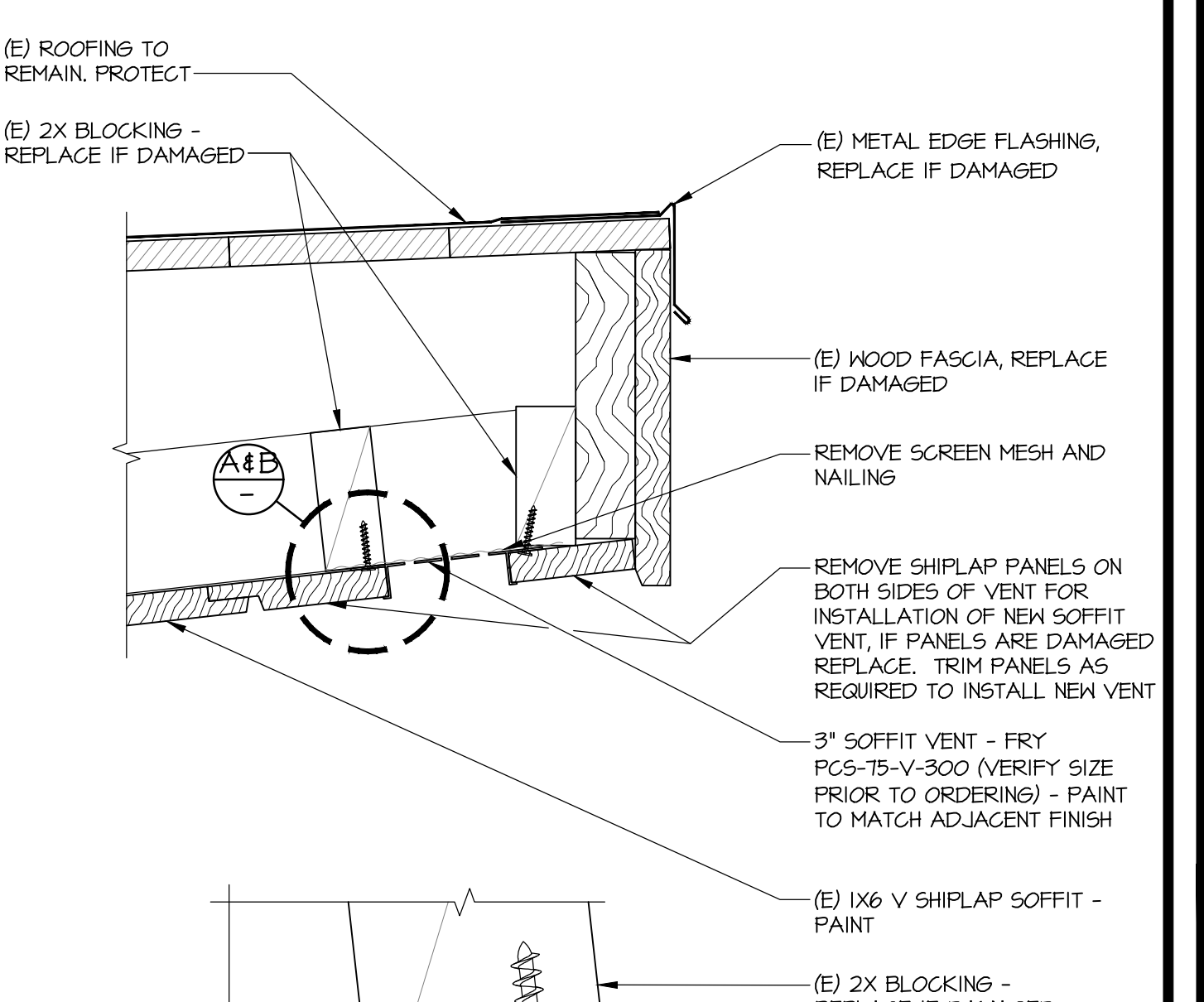
**GUTTER AT PORTABLES** SCALE: 3/8" = 1'-0" 6



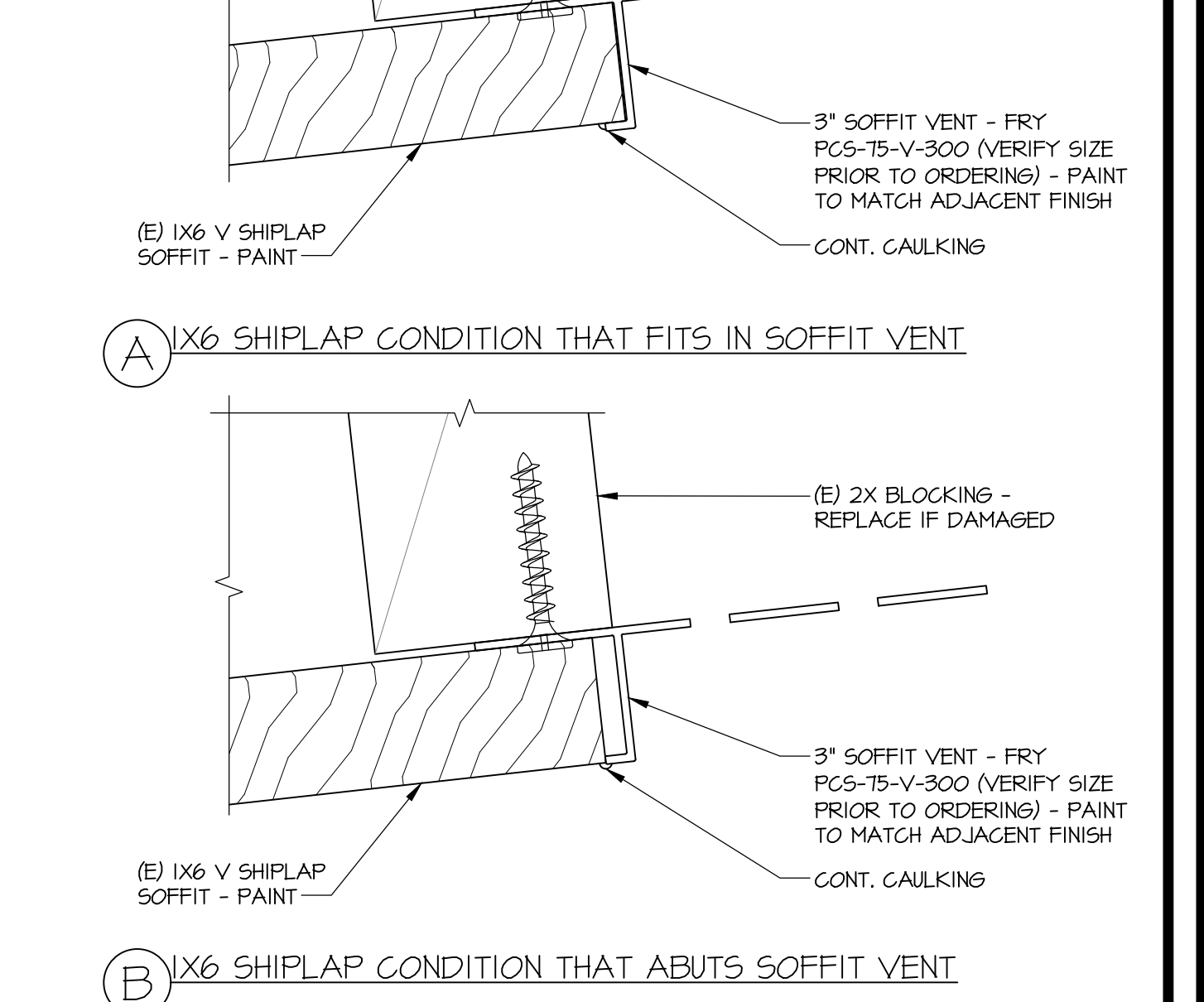
**VENT • PLASTER EAVE** SCALE: 3/8" = 1'-0" 7



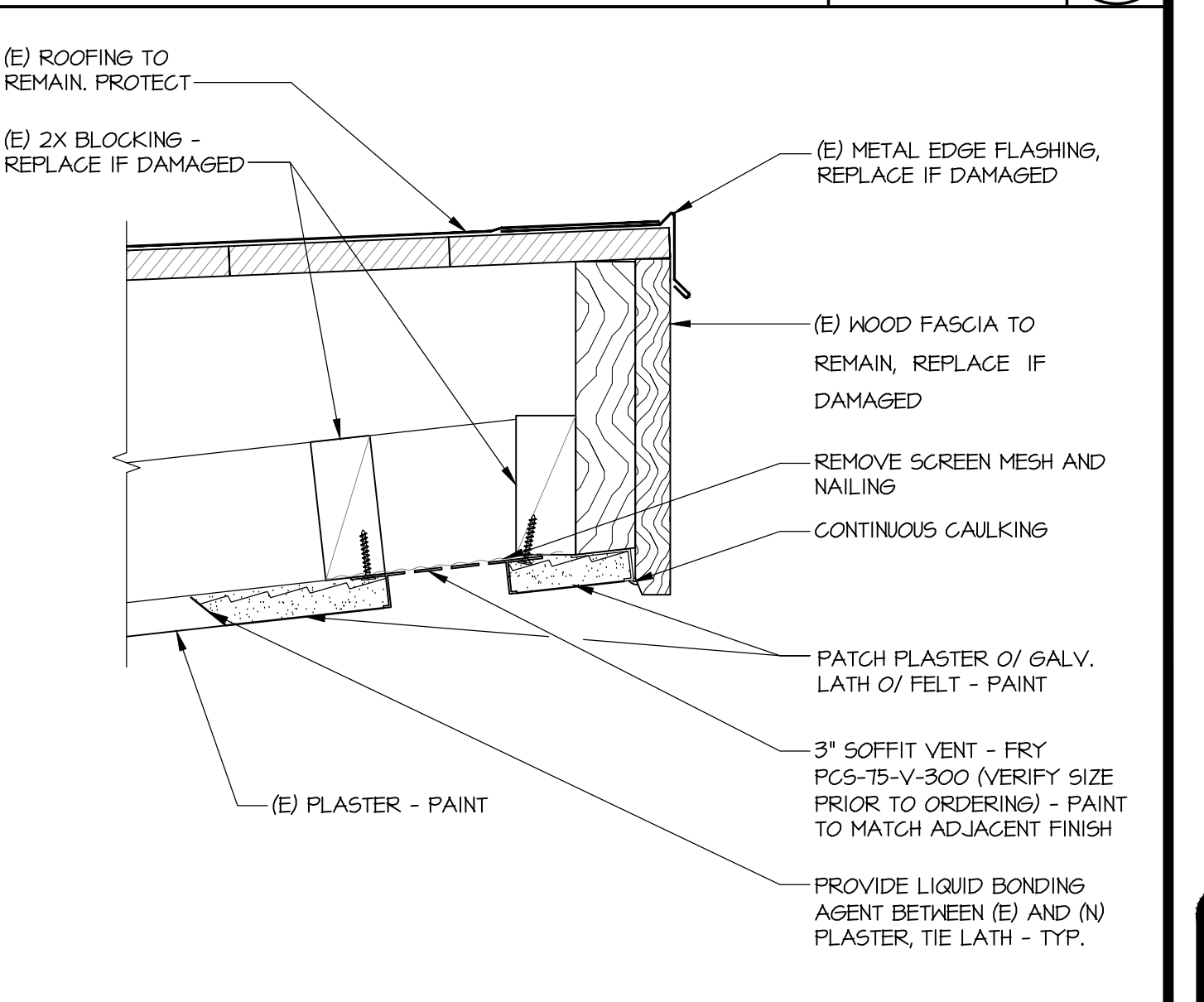
**GUTTER • EAVE** SCALE: 3/8" = 1'-0" 1



**VENT • WOOD EAVE** SCALE: 3/8" = 1'-0" 2



**VENT • WOOD EAVE** SCALE: 3/8" = 1'-0" 2



**VENT • PLASTER EAVE** SCALE: 3/8" = 1'-0" 3

DATE: 02/14/20	JOB NO.: 180104	DESIGNED BY: KC	DRAWN BY: KC	CHECKED BY: JP

**ZIEMBA + PRIETO ARCHITECTS**  
 401 South Glendens Boulevard • Suite 400 • Burbank, CA 91502  
 P: (818) 841-2885 • F: (818) 841-7782 • www.ziembaprietoarch.com

**LITTLE LAKE CITY SCHOOL DISTRICT**  
 10515 S. PIONEER BLVD.  
 SANTA FE SPRINGS, CA 90670

**DISTRICT WIDE PAINTING PROJECT**

**DETAILS**

**C-33216**  
 RENEWAL DATE NOV. 30, 2024  
 STATE OF CALIFORNIA

SHEET NO. **T3.0**

ORIGINAL DATE: 03/26/18