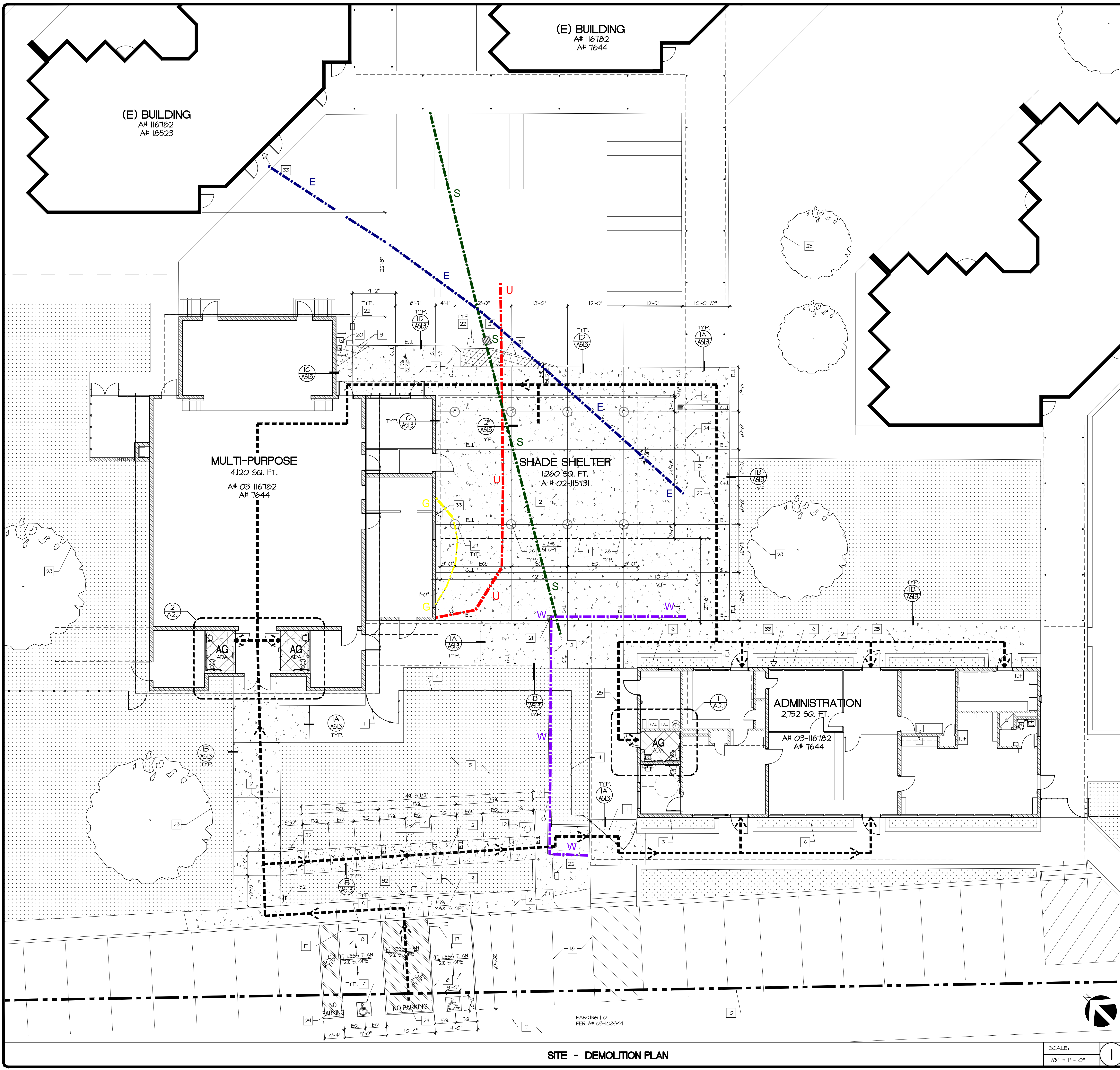
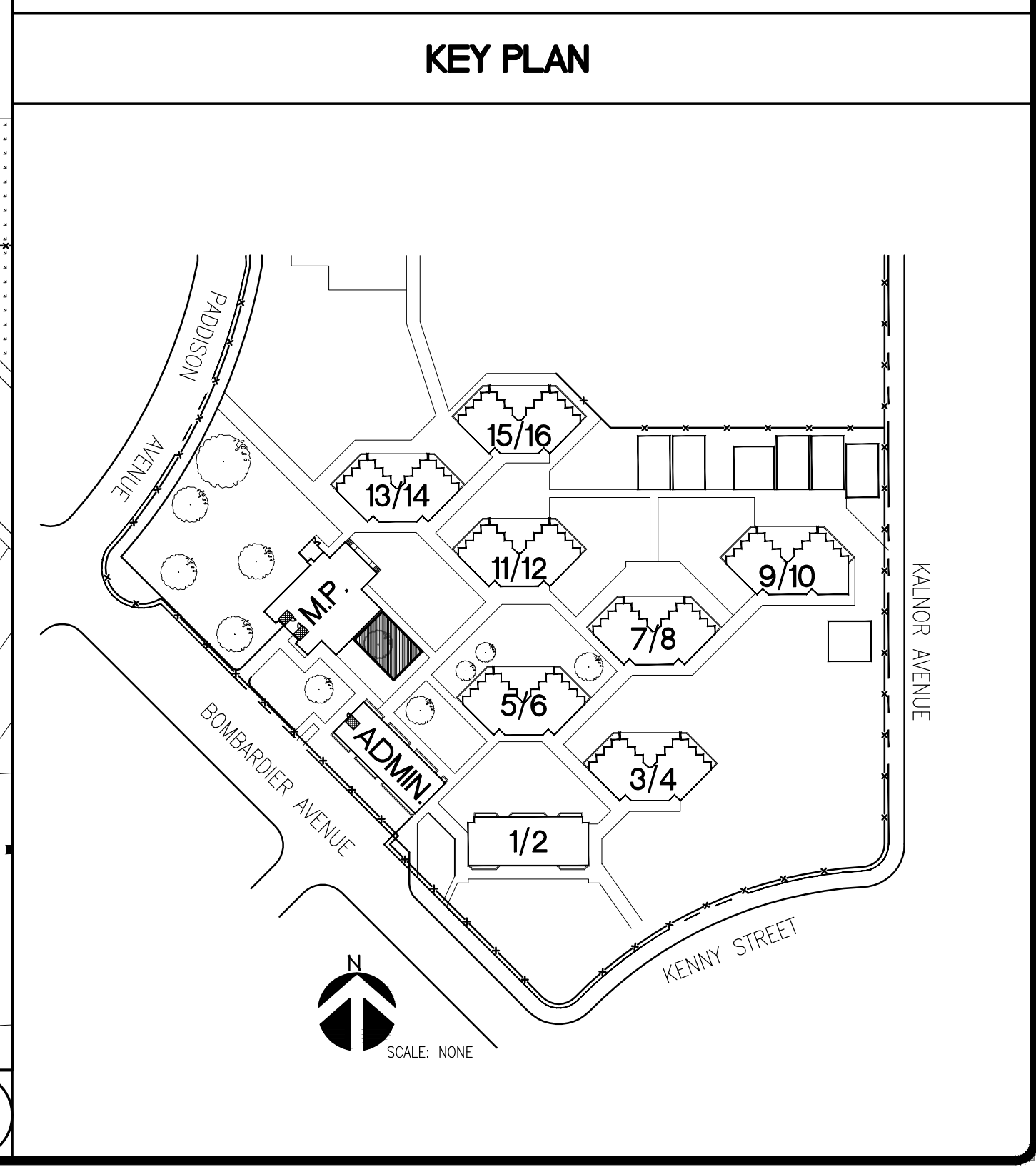


© BY ZIEMBA + PRIETO ARCHITECTS ALL COMMON LAW COPYRIGHT AND OTHER PROPERTY RIGHTS RESERVED. THIS DOCUMENT IS AN ORIGINAL AND UNPUBLISHED WORK PRODUCT OF ZIEMBA + PRIETO ARCHITECTS. THIS WORK SHALL NOT BE REPRODUCED, COPIED, DISCLOSED, USED, IN CONNECTION WITH ANY WORK OR PROJECT OTHER THAN THAT FOR WHICH IT WAS PREPARED, OR ASSIGNED TO ANY THIRD PARTY WITHOUT FIRST OBTAINING THE EXPRESS WRITTEN CONSENT OF ZIEMBA + PRIETO ARCHITECTS. VISUAL CONTACT WITH THIS DOCUMENT SHALL CONSTITUTE CONCLUSIVE EVIDENCE OF ACCEPTANCE OF THESE RESTRICTIONS. CONTRACTORS SHALL VERIFY AND BE RESPONSIBLE FOR ALL DIMENSIONS AND CONDITIONS ON THE JOB UPON DISCOVERY OF ANY VARIATION, DISCREPANCY, OR OMISSION. NOTIFY ZIEMBA + PRIETO ARCHITECTS AND PRIOR TO PROCEEDING WITH RELATED WORK OBTAIN WRITTEN RESOLUTION FROM ZIEMBA + PRIETO ARCHITECTS.



- ### CONSTRUCTION KEYED NOTES
- REFERENCE KEYNOTES ON PLANS APPLY TO THIS SHEET ONLY. NOT ALL KEYNOTES ARE USED.
- (E) CHAINLINK GATE TO REMAIN, PROTECT.
 - 4" CONG. SLAB WITH #4 BARS @ 16" EA. WAY, BROOM FINISH.
 - (E) BRICK WALL TO REMAIN, PROTECT.
 - (E) CHAINLINK FENCING TO REMAIN, PROTECT.
 - (E) GRASS/TURF AREA TO REMAIN, PROTECT.
 - (E) PLANTER AREA TO REMAIN, PROTECT.
 - (E) ASPHALT PAVING TO REMAIN, PROTECT.
 - (E) ACCESSIBLE PARKING STALLS.
 - CONCRETE CURB RAMP, REFER TO CIVIL DRAWINGS.
 - PROPERTY LINE.
 - LINE OF SHADE STRUCTURE ROOF ABOVE. (PER P.L.C. 02-115731)
 - (E) SCHOOL BELL TO REMAIN, PROTECT.
 - (E) FLAG POLE TO REMAIN, PROTECT.
 - (E) SCHOOL MARQUEE SIGN TO REMAIN, PROTECT.
 - (E) TRUNCATED DOMES TO REMAIN, PROTECT.
 - (E) PARKING STRIPING TO REMAIN, PROTECT.
 - (E) CONCRETE WHEELSTOP TO REMAIN, PROTECT.
 - (E) ACCESSIBLE PARKING SIGN ON POST TO REMAIN, PROTECT.
 - (E) 3'-0" X 3'-0" ISA SYMBOL.
 - (E) HI-LO DRINKING FOUNTAIN TO REMAIN, PROTECT.
 - (E) CATCH BASIN TO REMAIN, PROTECT.
 - (E) SERVICE BOX TO REMAIN, PROTECT.
 - (E) TREES TO REMAIN, PROTECT.
 - (E) METAL POST / SUPPORT TO REMAIN, PROTECT.
 - PATH OF TRAVEL.
 - STEEL TUBE COLUMNS, REFER TO MFR. DRAWINGS FOR SIZES. (P.C. 02-115731)
 - CONG. FOOTING. SEE DETAILS (4) (W30)
 - DOWNSPOUT TYP. AT THE SHADE STRUCTURE CORNERS, CONNECT TO STORM DRAIN.
 - 12" HEIGHT WHITE LETTERS PAINT.
 - NOT USED
 - NOT USED.
 - DIRECTIONAL SIGNAGE, REFER TO (4) (AS13)
 - (E) AUDIBLE FIRE ALARM, VERIFY IN FIELD
- STORM**
- ELECTRICAL** **E**
- GAS** **G**
- UNKNOWN** **U**
- WATER** **W**

- ### LEGEND
- (E) TURF/PLANTER AREA(S) TO REMAIN
 - (E) TOILET FACILITIES PER A# 116782
 - (N) CONCRETE PAVING
 - (N) AC PAVING
 - (E) CHAINLINK FENCE/GATE



NO.	DATE	REVISION

DATE: 1/28/2020
 JOB NO.: 190202
 DRAWN BY: AT
 CHECKED BY: JP

ZIEMBA + PRIETO ARCHITECTS
 401 South Chenequa Boulevard • Suite 400 • Burbank, CA 91502
 P: (818) 941-2585 • F: (818) 841-7782 • www.ziemprieto.com

ENLARGED SITE PLAN
 LAKELAND ELEMENTARY SCHOOL
 11224 BOMBARDIER AVENUE
 NORWALK, CA 90650

REGISTERED ARCHITECT
 GEORGE F. PRIETO
C-33216
 RENEWAL DATE
 NOV. 30, 2021
 STATE OF CALIFORNIA

IDENTIFICATION STAMP
 DIVISION OF THE STATE ARCHITECT
 FILE # 19 - 60
 APP. # 03 - 120542
 DATE: _____
 AC: _____ FLS: _____ SS: _____
 SHEET NO.
AS1.2

SITE - DEMOLITION PLAN

SCALE:
 1/8" = 1' - 0"