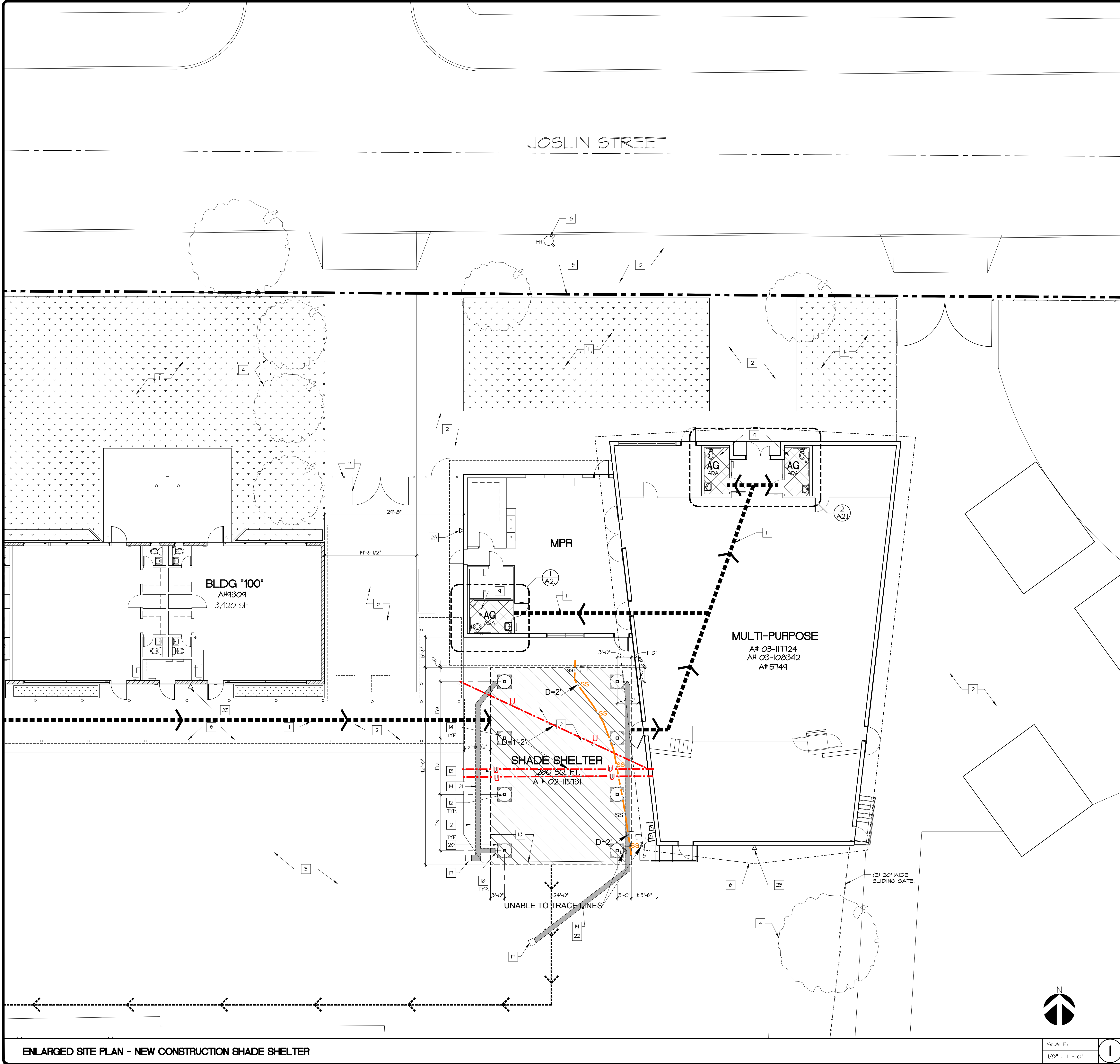


© BY ZIEMBA + PRIETO ARCHITECTS. ALL COMMON-LAW COPYRIGHT AND OTHER PROPERTY RIGHTS RESERVED. THIS DOCUMENT IS AN ORIGINAL AND UNPUBLISHED WORK PRODUCT OF ZIEMBA + PRIETO ARCHITECTS. VISUAL CONTACT WITH THIS DOCUMENT SHALL CONSTITUTE EVIDENCE OF ACCEPTANCE OF THESE RESTRICTIONS. CONTRACTORS SHALL VERIFY AND BE RESPONSIBLE FOR ALL DIMENSIONS AND CONDITIONS ON THE JOB. UPON DISCOVERY OF ANY VARIATION, DISCREPANCY, OR OMISSION, NOTIFY ZIEMBA + PRIETO ARCHITECTS AND PRIOR TO PROCEEDING WITH RELATED WORK OBTAIN WRITTEN RESOLUTION FROM ZIEMBA + PRIETO ARCHITECTS.



CONSTRUCTION KEYED NOTES

- REFERENCE KEYNOTES ON PLANS APPLY TO THIS SHEET ONLY. NOT ALL KEYNOTES ARE USED.
- 1 (E) TURF / PLANTER AREA(S) TO REMAIN.
 - 2 (E) CONCRETE WALKWAY / PAVING TO REMAIN, PROTECT.
 - 3 (E) ASPHALT CONCRETE PAVING TO REMAIN.
 - 4 (E) TREES TO REMAIN, PROTECT.
 - 5 HI-LO DRINKING FOUNTAIN TO REMAIN, PROTECT. (PER A# 03-108342)
 - 6 (E) LINE OF ROOF / OVERHANG ABOVE.
 - 7 (E) CHAIN-LINK FENCE / GATE.
 - 8 (E) METAL POST / SUPPORT.
 - 9 (E) ACCESSIBLE RESTROOM.
 - 10 (E) CONCRETE SIDEWALK.
 - 11 PATH OF TRAVEL (P.O.T.), BOTH DIRECTIONS. SEE GENERAL NOTE#4 ON SHEET AS1.0.
 - 12 STEEL TUBE COLUMN, REFER TO MFR. DRAWINGS FOR SIZES. (P.C. 02-115131)
 - 13 LINE OF SHADE STRUCTURE ABOVE. (PER P.C. 02-115131)
 - 14 CONC. FOOTING 36" DIA. SEE DETAILS (4) (M501)
 - 15 PROPERTY LINE.
 - 16 (E) FIRE HYDRANT.
 - 17 (E) CATCH BASIN.
 - 18 DOWNSPOUT TYP. AT THE SHADE STRUCTURE CORNERS, CONNECT TO (E) CATCH BASIN. (6) (AS1.7)
 - 19 SAW CUT CONCRETE/AC PAVING & REMOVE SOIL AS REQUIRED TO TRENCH FOR STORM DRAIN LINE. REFER TO CIVIL DRAWINGS.
 - 20 SAW CUT CONCRETE SLAB & REMOVE SOIL TO PROVIDE FOOTING FOR SHADE STRUCTURE (FOR FOOTING DEPTH REFER TO MANUFACTURER DRAWINGS).
 - 21 CONCRETE SLAB AT TRENCH LINE. SEE DETAIL (4) (AS1.2)
 - 22 AC PAVING AT TRENCH LINE. SEE DETAIL (7) (AS1.3)
 - 23 (E) AUDIBLE FIRE ALARM.

FIRE ALARM INFORMATION

MATCO TECH INC.
 34825 BELLA VISTA ROAD
 TEMECULA, CA 92592.
 CONTACT PERSON: MIKE MASCARO
 PHONE: (951) 400-6188
 MONITORING CENTER:
 OHS MONITORING CENTER.
 PHONE: (951) 651-2294
 ACCOUNT NUMBER: LAKEVIEW ELEMENTARY C5# FLFL10263

LEGEND

- (N) SHADE SHELTER PER PRE-APPROVED A#02-115131
- (E) TURF/PLANTER AREA(S)
- (E) TOILET FACILITIES PER A# 111724
- ASPHALT/CONCRETE PAVING AS REQUIRED.
- (E) CHAINLINK FENCE/GATE
- DENOTES BARRIER FREE PATH OF TRAVEL (P.O.T.) REFER TO GENERAL CONSTRUCTION NOTE #4 & CBC 1007.1
- DISCHARGE PATH OF TRAVEL.

KEY PLAN

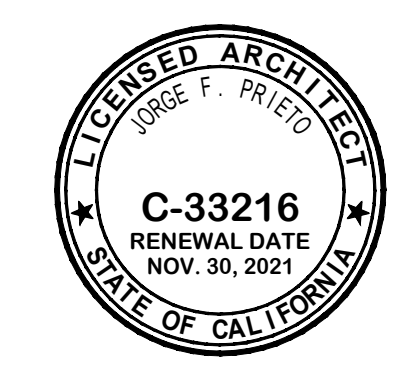


NO.	DATE	REVISION

DATE: 2/25/2020
 JOB NO.: 190203
 DRAWN BY: AT
 CHECKED BY: JP

ZIEMBA + PRIETO ARCHITECTS
 401 South Orange Boulevard • Suite 400 • Burbank, CA 91502
 P: (818) 841-2585 • F: (818) 841-7782 • www.ziemprieto.com

ENLARGED SITE PLAN
 LAKEVIEW ELEMENTARY SCHOOL
 11500 JOSLIN STREET
 SANTA FE SPRINGS, CA 90670



IDENTIFICATION STAMP
 DIVISION OF THE STATE ARCHITECT
 FILE # 19 - 60
 APP. # 03 - 120599
 AC: _____ FLS: _____ SS: _____
 DATE: _____

SHEET NO.
AS1.1

ENLARGED SITE PLAN - NEW CONSTRUCTION SHADE SHELTER

SCALE:
 1/8" = 1' - 0"