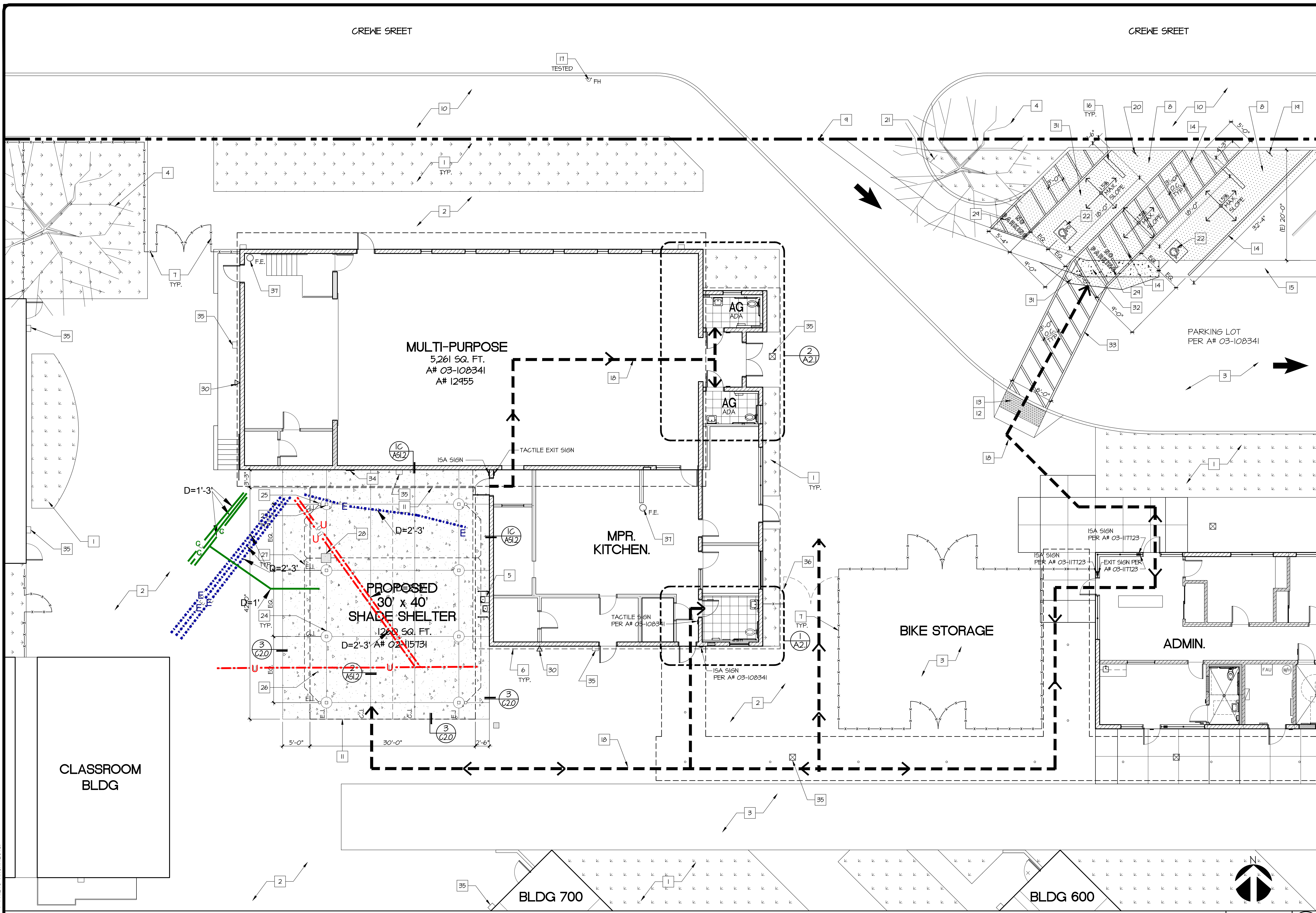


© BY ZEMBA + PRIETO ARCHITECTS. ALL COMMON-LAW COPYRIGHT AND OTHER PROPERTY RIGHTS RESERVED. THIS DOCUMENT IS AN ORIGINAL AND UNPUBLISHED WORK PRODUCT OF ZEMBA + PRIETO ARCHITECTS. VISUAL CONTACT WITH THIS DOCUMENT SHALL CONSTITUTE CONCLUSIVE EVIDENCE OF ACCEPTANCE OF THESE RESTRICTIONS. CONTRACTORS SHALL VERIFY AND BE RESPONSIBLE FOR ALL DIMENSIONS AND CONDITIONS ON THE JOB UPON DISCOVERY OF ANY VARIATION, DISCREPANCY, OR OMISSION. NOTIFY ZEMBA + PRIETO ARCHITECTS AND PRIOR TO PROCEEDING WITH RELATED WORK OBTAIN WRITTEN RESOLUTION FROM ZEMBA + PRIETO ARCHITECTS.



- ### CONSTRUCTION KEYED NOTES
- REFERENCE KEYNOTES ON PLANS APPLY TO THIS SHEET ONLY. NOT ALL KEYNOTES ARE USED.
- 1 (E) TURF / PLANTER AREA(S).
 - 2 (E) CONCRETE WALKWAY / PAVING PROTECT.
 - 3 (E) ASPHALT CONCRETE PAVING.
 - 4 (E) TREES
 - 5 (E) HI-LO DRINKING FOUNTAIN.
 - 6 (E) LINE OF ROOF / OVERHANG ABOVE.
 - 7 (E) CHAIN-LINK FENCE / GATE.
 - 8 ACCESSIBLE PARKING STALL
 - 9 PROPERTY LINE.
 - 10 (E) CONCRETE SIDEWALK.
 - 11 LINE OF SHADE STRUCTURE ABOVE. (PER P.C. 02-11513)
 - 12 (E) CURB RAMP PER A# 03-108341.
 - 13 (E) TRUNCATED DOMES PER A# 03-108341. TRUNCATED DOMES MUST COMPLY WITH "IN-LINE" ORIENTATION - MODIFY AS REQUIRED TO COMPLY WITH 2014 CBC 11B-105.
 - 14 4" PARKING STRIPING, TRAFFIC BLUE - 2 COATS, WHITE AT DIAGONAL STRIPING.
 - 15 (E) CONCRETE SHALE.
 - 16 WHEELSTOP
 - 17 (E) FIRE HYDRANT.
 - 18 PATH OF TRAVEL (P.O.T.), BOTH DIRECTIONS. SEE GENERAL NOTE#4 ON SHEET AS1.0.
 - 19 (E) ACCESSIBLE PARKING SIGN ON POST.
 - 20 (E) VAN ACCESSIBLE PARKING SIGN ON POST.
 - 21 (E) TOW AWAY SIGN ON POST. VERIFY SIGN TEXT COMPLIES WITH 2014 CBC 11B-502.8
 - 22 ISA SYMBOL PER DETAIL (C2.0)
 - 23 STEEL TUBE COLUMNS. REFER TO SHADE MFR. DRAWINGS FOR SIZES. (P.C. 02-11513)
 - 24 CONC. FOOTINGS. SEE DETAILS (4 MB01)
 - 25 DOWN SPOUT TYP. AT THE SHADE STRUCTURE CORNERS, CONNECT TO STORM DRAIN.
 - 26 4" CONC. SLAB WITH #4 BARS @ 16" EA. WAY, BROOM FINISH.
 - 27 PROVIDE STORM DRAINAGE AS PER CIVIL DRAWINGS
 - 28 PROVIDE NEW STORM DRAIN GRATE. REFER TO CIVIL DRAWINGS.
 - 29 12" HEIGHT WHITE LETTERS (NO PARKING)
 - 30 (E) AUDIBLE FIRE ALARM
 - 31 AC PAVING, REFER TO CIVIL DRAWINGS.
 - 32 CONCRETE SHALE, REFER TO CIVIL DRAWINGS.
 - 33 WHITE STRIPING (OR YELLOW COLOR MUST CONTRAST WITH PAVING).
 - 34 SIGN - NOT FOR STORAGE OR USE OF FLAMMABLE, COMBUSTIBLE OR HAZARDOUS MATERIALS.
 - 35 (E) LIGHT FIXTURE.
 - 36 FR. 4'-0" W X 6'-0" HT. GATES W/ PANIC HARDWARE. REFER TO I2/AS1.2
 - 37 (E) FIRE EXTINGUISHER REFER TO DETAIL 4/AS1.2

FIRE ALARM INFORMATION

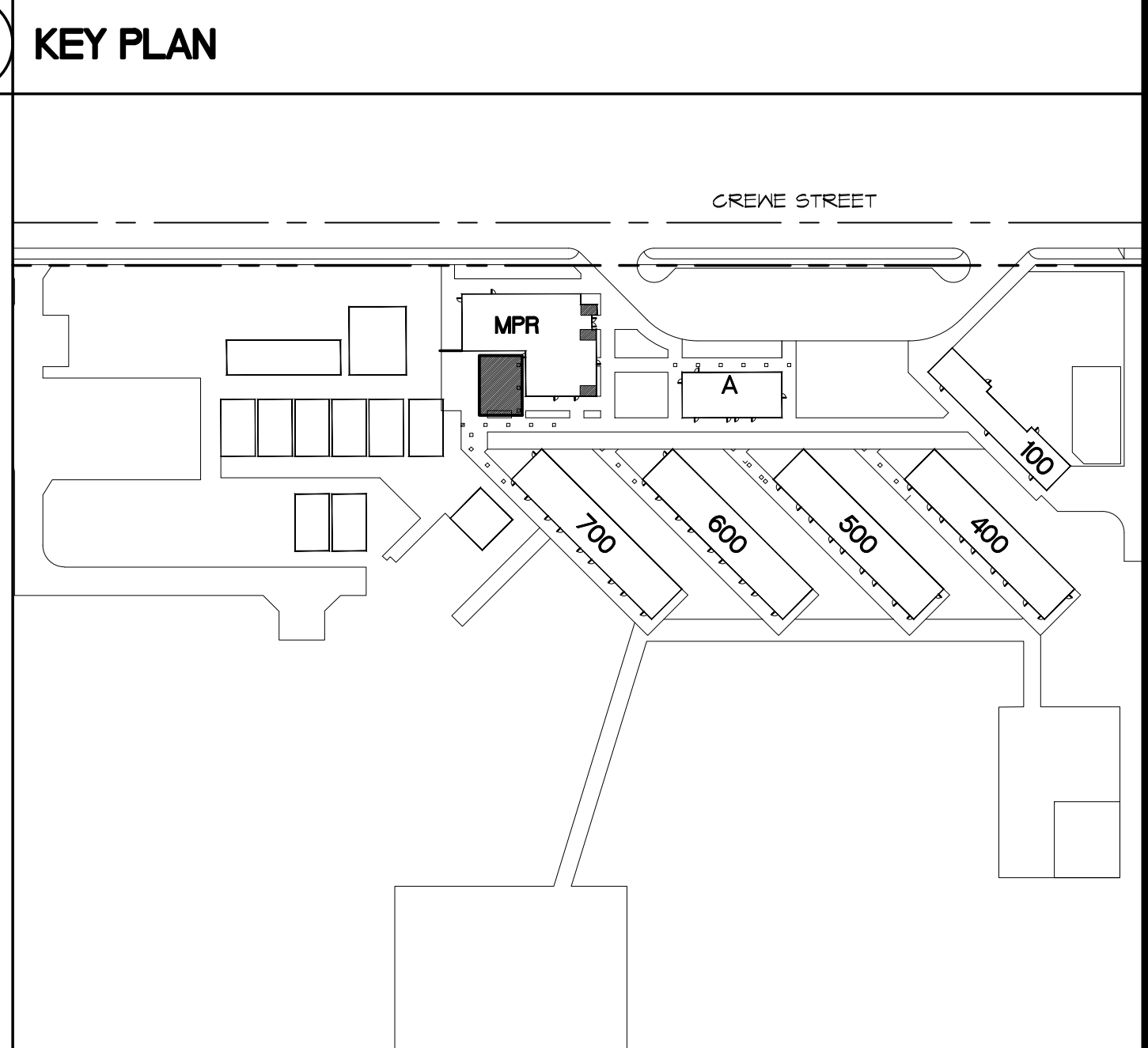
MATCO TECH INC.
39825 BELLA VISTA ROAD
THERMILA, CA 92542.
CONTACT PERSON: MIKE MASCARO
PHONE: (213) 400-6138
ACCOUNT NUMBER: PADDISON ELEMENTARY C5# FLFLU0264

- ### LEGEND
- (N) SHADE SHELTER PER PRE-APPROVED APRO2-115131
 - (E) TURF/PLANTER AREA(S)
 - (E) TOILET FACILITIES PER A# IIT24 4 116182
 - (N) A.C. PAVING, REFER TO CIVIL DRAWINGS
 - (N) CONCRETE PAVING, REFER TO CIVIL DRAWINGS.
 - (E) CHAINLINK FENCE/GATE
 - DENOTES BARRIER FREE PATH OF TRAVEL (P.O.T.)

SHADE SHELTER ENLARGED SITE PLAN - NEW CONSTRUCTION

BUILDING	SHADE SHELTER	BUILDING	ADMINISTRATION	BUILDING	KINDERGARTEN
OCCUPANCY TYPE	= A-3	OCCUPANCY TYPE	= B	OCCUPANCY TYPE	= E
CONSTRUCTION TYPE	= TYPE III-B	CONSTRUCTION TYPE	= TYPE III-B	CONSTRUCTION TYPE	= TYPE III-B
BUILDING FLOOR AREA	= 1,260 S.F.	BUILDING FLOOR AREA	= 2,240 S.F.	BUILDING FLOOR AREA	= 2,628 S.F.
BUILDING HEIGHT	= 1 STORY	BUILDING HEIGHT	= 1 STORY	BUILDING HEIGHT	= 1 STORY
FIRE SPRINKLER SYSTEM	= NONE	FIRE SPRINKLER SYSTEM	= NONE	FIRE SPRINKLER SYSTEM	= NONE
ALLOWABLE FLOOR AREA	= 4,500 S.F.	ALLOWABLE FLOOR AREA	= 14,000 S.F.	ALLOWABLE FLOOR AREA	= 14,500 S.F.
BUILDING	MULTIPURPOSE BUILDING	BUILDING IS WITH-IN	ALLOWABLE FLOOR AREA	BUILDING IS WITH-IN	ALLOWABLE FLOOR AREA
OCCUPANCY TYPE	= A-3	BUILDING IS WITH-IN	ALLOWABLE FLOOR AREA	BUILDING IS WITH-IN	ALLOWABLE FLOOR AREA
CONSTRUCTION TYPE	= TYPE III-B		= 14,000 S.F.		= 14,500 S.F.
BUILDING FLOOR AREA	= 5,261 S.F.				
BUILDING HEIGHT	= 1 STORY				
FIRE SPRINKLER SYSTEM	= NONE				
ALLOWABLE FLOOR AREA	= 4,500 S.F.				
TOTAL SQ. FT. SHADE SHELTER AND MULTIPURPOSE BUILDING	= 6,521 S.F.				
BUILDINGS ARE WITH-IN ALLOWABLE FLOOR AREA	= 4,500 S.F.				

BUILDING ANALYSIS



NO.	DATE	REVISION

DATE: 2-11-2020
JOB NO.: 190204
DRAWN BY: RG
CHECKED BY: JP

ZIEMBA + PRIETO ARCHITECTS
401 South Orange Boulevard • Suite 400 • Burbank, CA 91502
P: (818) 941-2585 • F: (818) 841-7782 • www.ziembaprieto.com

ENLARGED NEW CONSTRUCTION SITE PLAN & DETAILS
LITTLE LAKE CITY SCHOOL DISTRICT
PADDISON ELEMENTARY SCHOOL
12100 CREWE STREET
NORWALK, CA 90650



IDENTIFICATION STAMP
DIVISION OF THE STATE ARCHITECT
FILE # 19 - 60
APP. # 03 - 120566
DATE: _____
AC: _____ FLS: _____ SS: _____
SHEET NO. AS1.1B