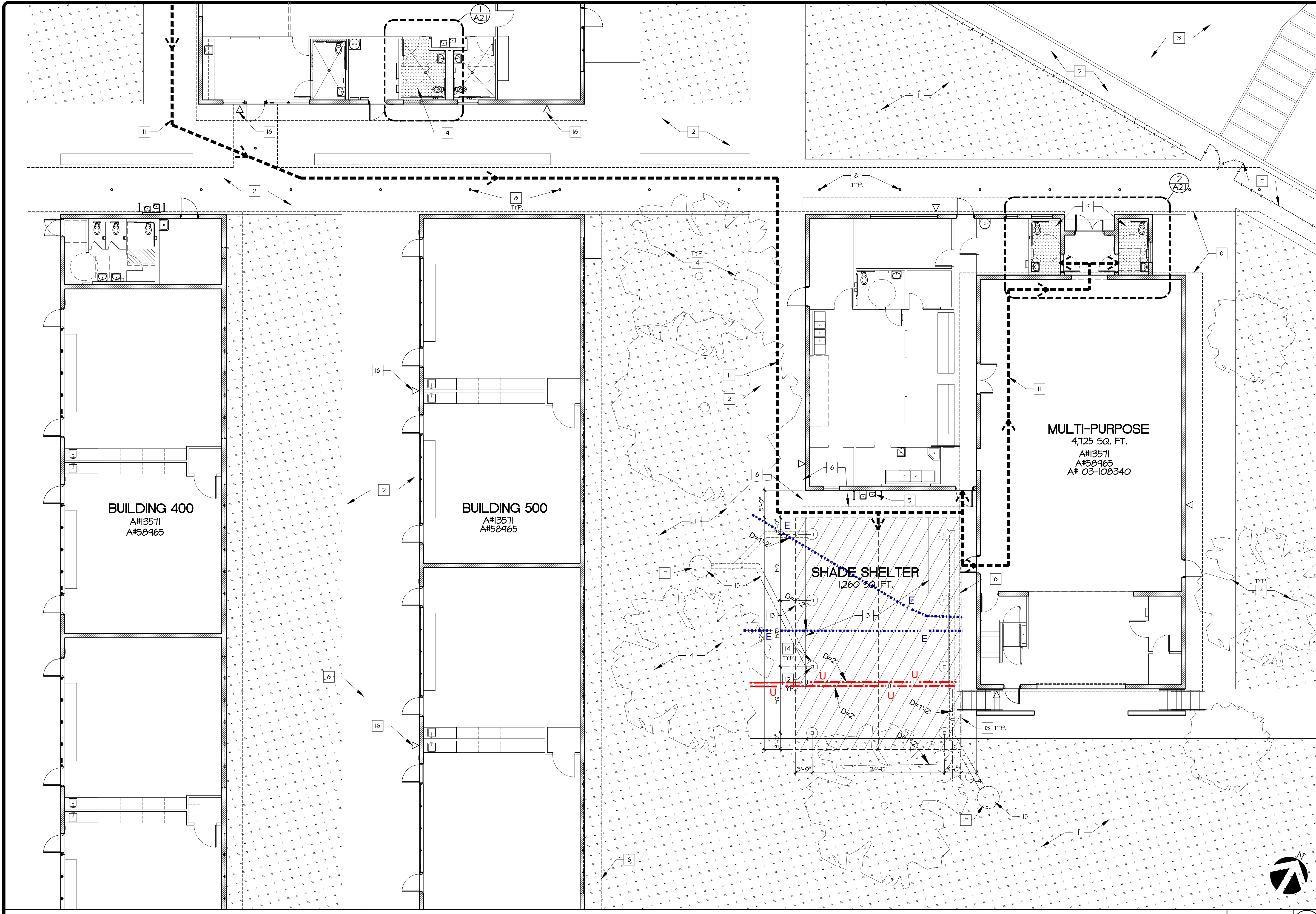


BY ZEMBA + PRIETO ARCHITECTS, ALL COMMON LAW, COPYRIGHT AND OTHER PROSPECTIVE RIGHTS RESERVED. THIS DOCUMENT IS AN ORIGINAL AND UNREVISED WORK PRODUCT OF ZEMBA + PRIETO ARCHITECTS. ANY REVISIONS, CORRECTIONS, CHANGES, DELETIONS, ADDITIONS, OR OMISSIONS, NOTIFY ZEMBA + PRIETO ARCHITECTS AND PRIOR TO PROCEEDING WITH RELATED WORK OBTAIN WRITTEN RESOLUTION FROM ZEMBA + PRIETO ARCHITECTS. VISUAL CONTACT WITH THIS DOCUMENT SHALL CONSTITUTE EVIDENCE OF ACCEPTANCE OF THESE RESTRICTIONS. CONTRACTORS SHALL VERIFY AND BE RESPONSIBLE FOR ALL DIMENSIONS AND CONDITIONS ON THE JOB. UPON DISCOVERY OF ANY VARIATION, DISCREPANCY, OR OMISSION, NOTIFY ZEMBA + PRIETO ARCHITECTS IMMEDIATELY.



**CONSTRUCTION KEYED NOTES**

- REFERENCE KEYNOTES ON PLANS APPLY TO THIS SHEET ONLY. NOT ALL KEYNOTES ARE USED.
- 1 (E) TURF / PLANTER AREA(S) TO REMAIN.
  - 2 (E) CONCRETE WALKWAY / PAVING TO REMAIN, PROTECT.
  - 3 (E) ASPHALT CONCRETE PAVING TO REMAIN.
  - 4 (E) TREES TO REMAIN, PROTECT.
  - 5 (E) HI-LO DRINKING FOUNTAIN TO REMAIN, PROTECT.
  - 6 (E) LINE OF ROOF / OVERHANG ABOVE.
  - 7 (E) CHAIN-LINK FENCE / GATE.
  - 8 (E) METAL POST / SUPPORT.
  - 9 (E) ACCESSIBLE RESTROOM.
  - 10 NOT USED.
  - 11 PATH OF TRAVEL (P.O.T.), BOTH DIRECTIONS. SEE GENERAL NOTE #4 ON SHEET AS1.0.
  - 12 STEEL TUBE COLUMNS, REFER TO MFR. DRAWINGS FOR SIZES, (P.C. 02-1513).
  - 13 LINE OF SHADE STRUCTURE ROOF ABOVE (PER P.C. 02-1513).
  - 14 CONC. SHADE STRUCTURE FOOTINGS, SEE DETAILS (A) (A12).
  - 15 PARTIALLY DEMOLISH AND REMOVE ASPHALT / CONCRETE AS REQUIRED TO PROVIDE SHADE STRUCTURE FOOTINGS AND ROOF DRAINAGE TO MATCH SCOPE OF WORK FROM CIVIL DRAWINGS. PATCH AND REPAIR WITH ASPHALT / CONCRETE AS REQUIRED.
  - 16 (E) AUDIBLE FIRE ALARM.
  - 17 PROTECT / PATCH / REPAIR TURF / LAWN AREAS AROUND CIVIL DRAINAGE AS REQUIRED, IRRIGATION PIPING, SPRINKLER HEADS, ETC. IF DAMAGED, REPLACE IN KIND OR AS DIRECTED BY DISTRICT.

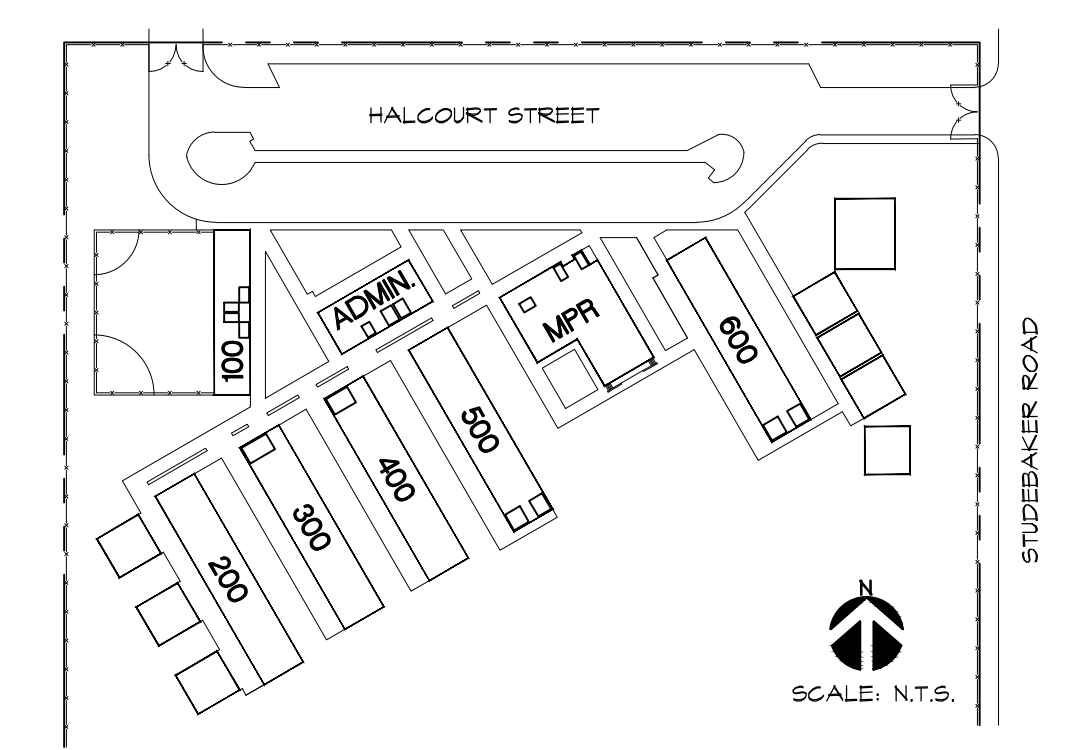
**LEGEND**

- (N) SHADE SHELTER PER PRE-APPROVED APO2-115131
- (E) TURF/PLANTER AREA(S)
- (E) TOILET FACILITIES PER A# 111124 & 116182
- (E) CHAINLINK FENCE/GATE
- DENOTES BARRIER FREE PATH OF TRAVEL (P.O.T.) REFER TO GENERAL CONSTRUCTION NOTE #4 & CBC 10071.

**ENLARGED SITE PLAN - NEW CONSTRUCTION SHADE SHELTER**

SCALE:  
1/8" = 1' - 0"

**KEY PLAN**



NO.	DATE	REVISION

DATE: 1/28/2020  
 JOB NO.: 190205  
 DRAWN BY: CT  
 CHECKED BY: JP

**ZEMBA + PRIETO ARCHITECTS**  
 401 South Geneva Boulevard • Suite 400 • Burbank, CA 91502  
 P: (818) 841-2535 • F: (818) 841-7792 • www.zembaoriprieto.com

**LITTLE LAKE CITY SCHOOL DISTRICT**  
 10515 SOUTH PIONEER BLVD.  
 SANTA FE SPRINGS, CA 90670

**STUDEBAKER ELEMENTARY SCHOOL**  
 11800 HALCOURT AVENUE  
 NORWALK, CA 90660

**C-33216**  
 RENEWAL DATE  
 NOV 30, 2021  
 STATE OF CALIFORNIA

IDENTIFICATION STAMP  
 DIVISION OF THE STATE ARCHITECT  
 FILE # 19 - 60  
 APP. # 03 - 120543  
 DATE \_\_\_\_\_

SHEET NO.  
**AS1.1**